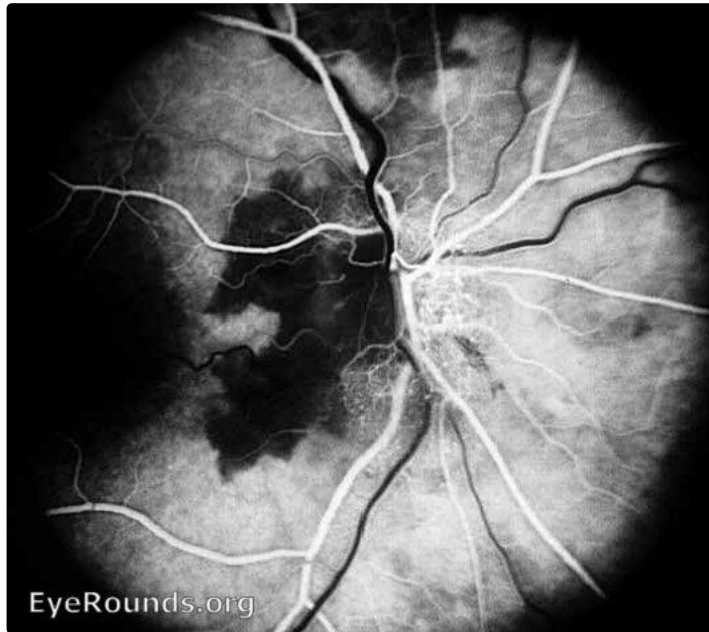


Giant Cell Arteritis (Temporal Arteritis) - GCA

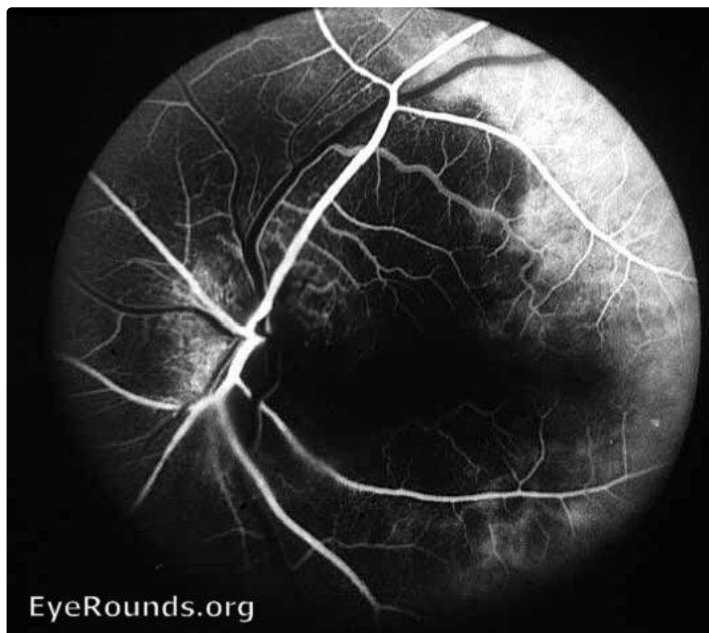
Category(ies): Neuro-ophthalmology, Retina

Contributor: [Andrew Doan, MD](#), [Sohan Hayreh, MD, PhD](#)

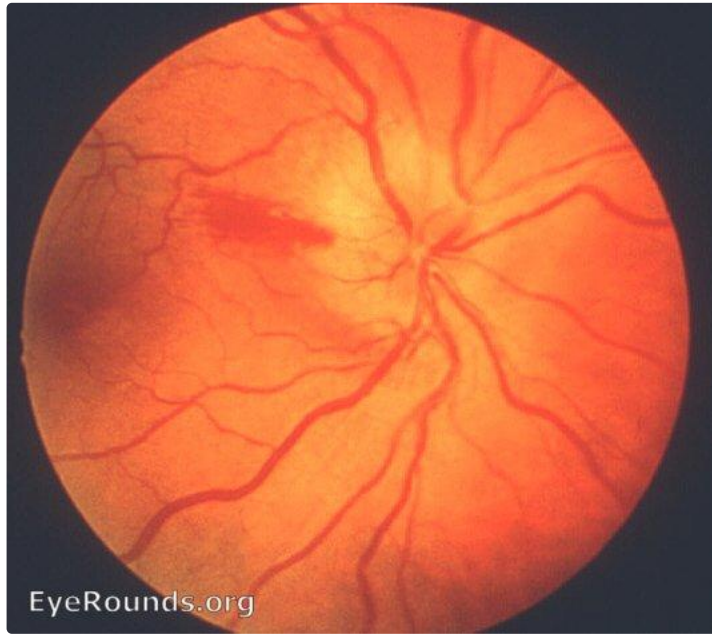


1) Shows filling defect in the peripapillary choroid and adjacent optic disc area.

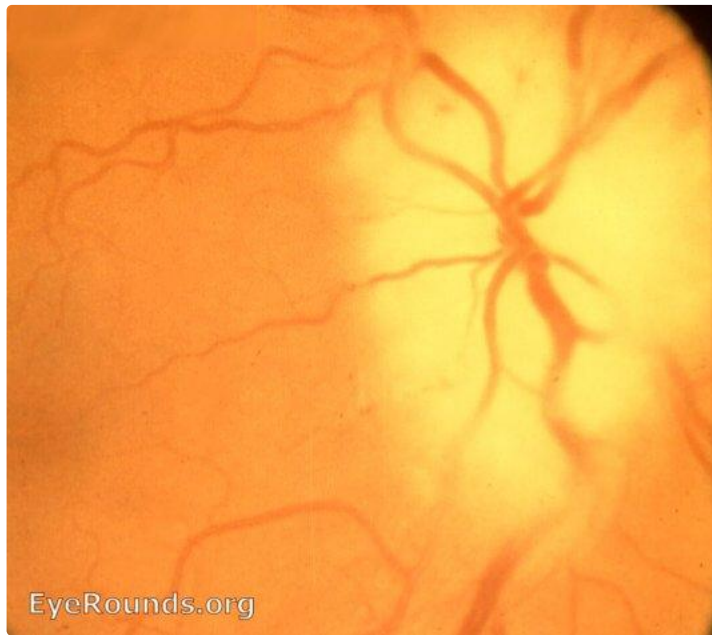
[Enlarge](#) [Download](#)



2) Shows complete occlusion of medial posterior ciliary artery occlusion and cilioretinal artery.



3) Shows typically seen optic disc edema and a splinter hemorrhage at the optic disc margin in non-arteritic AION.



4) Shows typical chalky white optic disc edema.

Image Permissions:



Ophthalmic Atlas Images by [EyeRounds.org](#), [The University of Iowa](#) are licensed under a [Creative Commons Attribution-NonCommercial-NoDerivs 3.0 Unported License](#).

Related Articles



Address

University of Iowa
Roy J. and Lucille A. Carver College
of Medicine
Department of Ophthalmology and
Visual Sciences
200 Hawkins Drive
Iowa City, IA 52242

[Support Us](#)

Legal

Copyright © 2019 The University of
Iowa. All Rights Reserved
[Report an issue with this page](#)
[Web Privacy Policy](#) |
[Nondiscrimination Statement](#)

Related Links

[Cataract Surgery for Greenhorns](#)
[EyeTransillumination](#)
[Gonioscopy.org](#)
[Iowa Glaucoma Curriculum](#)
[Iowa Wet Lab](#)
[Patient Information](#)
[Stone Rounds](#)
[The Best Hits Bookshelf](#)

EyeRounds Social Media

Follow



Receive notification of new cases,
[sign up here](#)
[Contact Us](#)
[Submit a Suggestion](#)